
New Software Version:	1.04.0087
Instrument:	Madsen OTOflex 100
Program:	OTODiagnostics Suite

Released by: CAS	Date: 07-Oct-05
------------------	-----------------

Product and version:

OTODiagnostics Suite (ODS) software version 1.04.0087

Distributed on:

OTODiagnostics Suite CD version 8-49-68100/07

A special limited version of the software for upgrades of existing installations are available for download from the GN Otometrics extranet: www.gnotometrics.com. These cannot be used for first time installation of ODS.

General product description:

- **MADSEN OTOflex 100** is a diagnostic middle ear analyzer for tympanometry and acoustic reflex testing.
- **OTODiagnostics Suite** is a PC software package for middle ear diagnostics. In its current version, it is targeted for use with the Madsen OTOflex 100 Diagnostic and Madsen OTOflex 100 Quick-check middle ear analysers.
- **Bluetooth:** ODS connects to OTOflex 100 via a low power secure wireless Bluetooth radio link (encrypted communication).

The CD contains:

- OTODiagnostics Suite software version 1.04.0087 – New
- Madsen OTOflex 100 firmware version 2.01.0171
- User guides, reference manuals and installation guides
- OTOflex 100 quick-guide (in electronic format; can be ordered printed)

Replaces:

- OTODiagnostics Suite software version 1.03.0086 and older

Distributed on:

- OTODiagnostics Suite CD version 8-49-68100/06 and older

Update requirements:

- Upgrade of ODS versions 1.03.0073 and OTOflex firmware version 2.01.0156 or older is mandatory due to many product improvements.
- Upgrade of ODS version 1.03.0086 is recommended for all users using the ODS software on a regular basis.

OTODiagnostics Suite software updates (compared to version 1.03.0086):

- User defined settings will be preserved when upgrading an existing system.
- A Pdf Printer Driver is included on the ODS CD to fully support report export in pdf format.
- The 'Get Patient Folder from OTOflex' button in the 'Select Patient Folder' dialog that may appear when connecting to OTOflex now works correctly (did not work in ODS version 1.03.0086).
- The F1 key activates help also in open dialogs.

Refer also to the recent release note for CD Rev. 6 (major update compared to the Dec 2004 release). Please study the following pages for installation and trouble shooting info and FAQs.

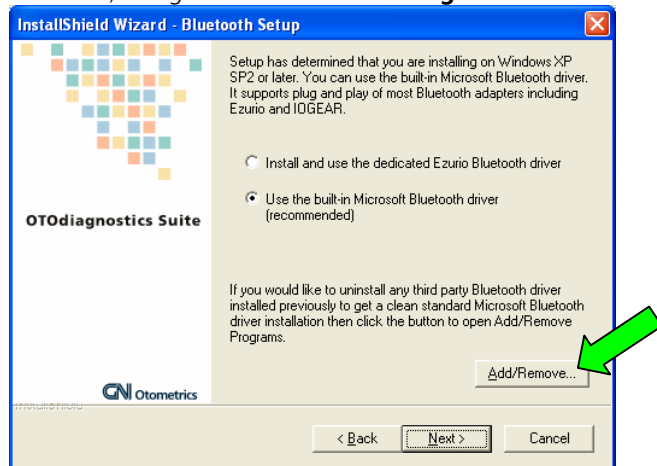
Important notes and FAQ

Installation notes

Note:

Upgrading ODS on Windows XP SP2:

When installing on Windows XP SP2 you **must** manually remove the previous Bluetooth installation (IOGEAR or others) using the **Add/Remove Programs** button available in the installation dialog.



Frequently asked questions (FAQ)

Question:

Answer:

Should I remove the IOGEAR Bluetooth adapter (dongle) before upgrading the ODS?

Remove any Bluetooth adapter from the PC before installing or upgrading ODS.

My PC has built-in Bluetooth. What do I do?

Turn off the built-in Bluetooth if you want to use the Ezurio Bluetooth adapter (recommended for optimal reliability).

Will settings stored in the PC survive the ODS upgrade?

Yes (from CD Rev. 7 only)

Will settings stored in OTOflex survive the OTOflex firmware upgrade.

Yes

Trouble shooting guide

Each row in the following table represents a separate event and how to proceed:

Event:

This message may appear while ODS is updating the device list in the 'Select and Manage Device' dialog.

The message indicates that a found OTOflex does not support secure encrypted connections.

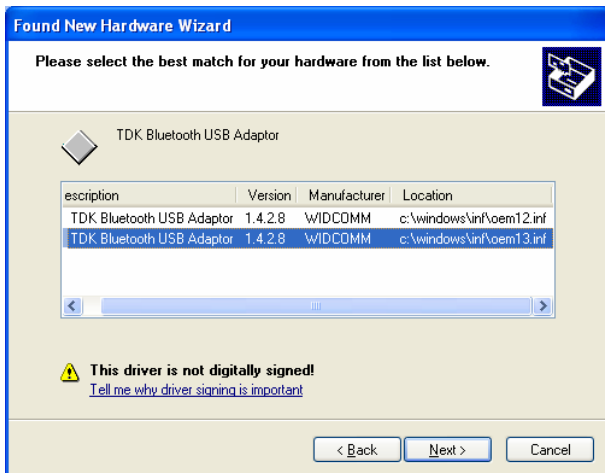
What to do:*Issue:*

The OTOflex has not been upgraded with the latest firmware (version 2.01.0171 or later).

Solution:

Click OK. ODS will now try to connect to the OTOflex without using secure pairing. This will work for Windows XP SP1 and Windows 2000.

The connection will not succeed if you are using the standard Microsoft Bluetooth driver in Windows XP SP2. In this case you may want to install the dedicated Ezurio driver on the PC to allow connection. Alternatively, use a PC without Windows XP SP2 or with the dedicated Ezurio driver installed to upgrade the OTOflex firmware and then try to update the list again.



This message may appear during installation of the the Ezurio (TDK) Bluetooth driver.

Issue:

Several Bluetooth drivers have been installed.

Solution:

Select the 'TDK Bluetooth USB Adaptor, WIDCOMM' driver with the highest number in the Location column and click Next to continue the installation.



This message may appear while installing the software Bluetooth software (manually or automatically).

It indicates that a Bluetooth based PC network cannot be established.

Issue:

None. The network service is not needed for OTOflex communication.

Solution:

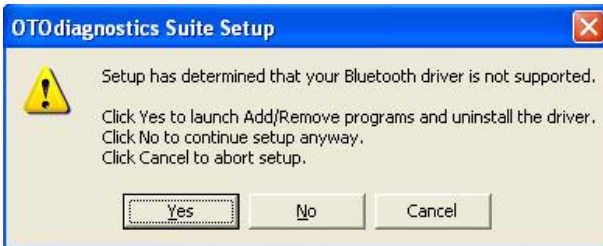
Click OK. The installation will continue unaffected.

Event:**What to do:***Issue:*

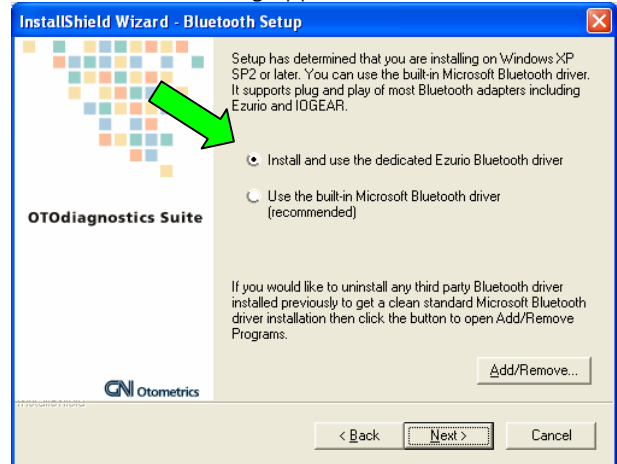
The PC may have an old Bluetooth driver installed.

Solution:

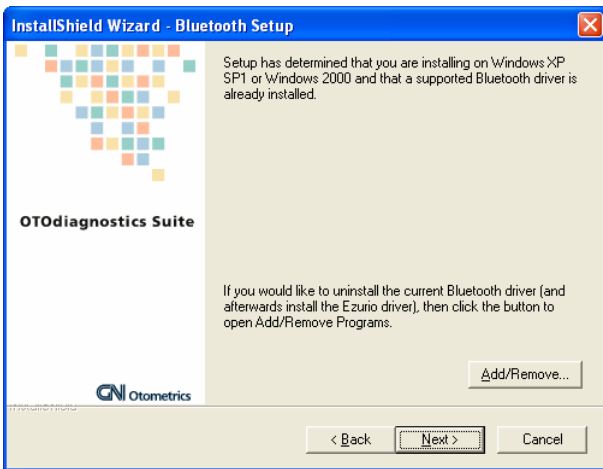
Click No. A new dialog appears:



This message may appear during installation.



First click the Add/Remove Programs button and remove any installed Bluetooth (look for the Bluetooth icon in the program list). Now select installation of the dedicated Ezurio Bluetooth driver and click Next.



This dialog may appear although you just uninstalled your Bluetooth software from the ODS setup.

Issue:

This is an error in the installation software.

Solution:

If you are sure that you have completely uninstalled all Bluetooth software you could try going Back since the setup might detect the uninstalled state correctly when you click Next again. Otherwise, you will have to click Next to install the ODS and then install the driver manually from the CD by running X:\ODS\Ezurio 1.4.2.18 nodk\setup.exe (where X is your cd-rom drive letter).

Event:**What to do:***Issue:*

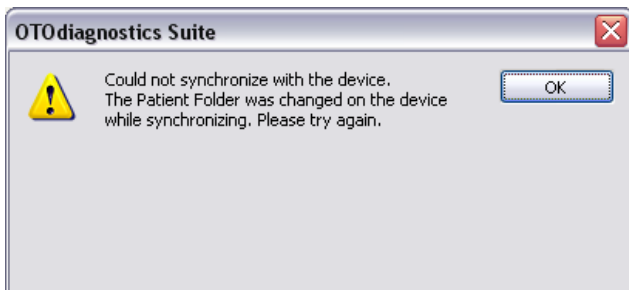
This is an error in the ODS software version 1.04.0086.

Solution:

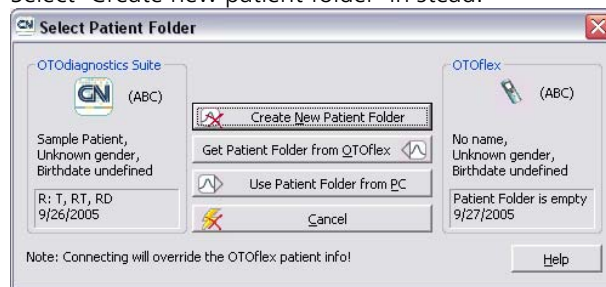
Upgrade to version 1.04.0087

Workaround:

Select 'Create new patient folder' in stead:



This message may appear when selecting 'Get Patient Folder from OTOflex' from the 'Select Patient Folder' dialog.



Then use the 'Get patient folders from device' tool button to get a list of patients from the OTOflex and select and upload the latest patient.