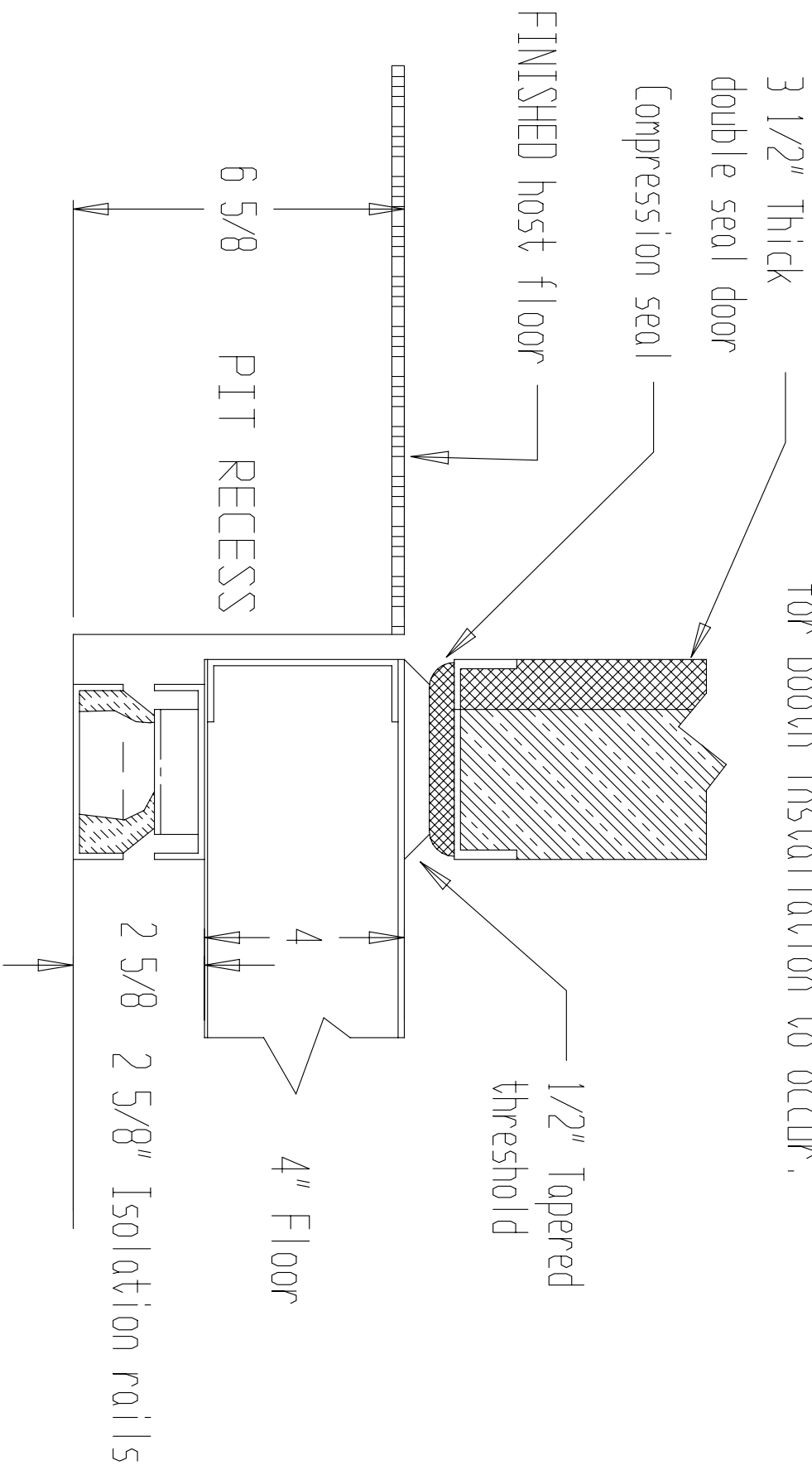



NOTE: Pit must be level to within 1/8" over 10' for booth installation to occur.



Pit / Threshold Detail
4" Floor with 2 5/8" Isolation Rails

TITLE Pit / Threshold Detail		 AUSTIN, TEXAS		DRAWN BY SMD		DATE 3/3/04	
FOR Technical Manual		DRWG. NO. SHT. 1 OF 1		SCALE		CHECKED BY DATE NOTES For Proposal Only	